

PUBLISHED
MAY 11, 1943.
BY A. P. C.

W. BURNSTYN
GETTER PILL BOX
Filed Feb. 28, 1941

Serial No.
380,991



Fig. 1a.

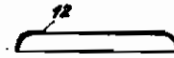


Fig. 2a.

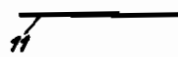


Fig. 1b.

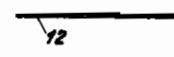


Fig. 2b.



Fig. 3a.

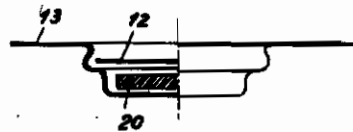


Fig. 3b.

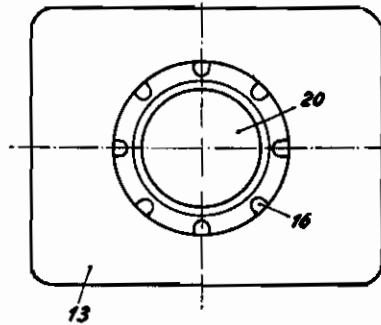


Fig. 4a.

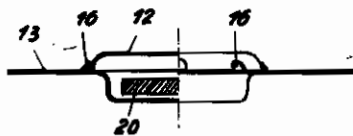


Fig. 4b.

Inventor:

Walter Burnstyn

ALIEN PROPERTY CUSTODIAN

GETTER PELLET BOX

Walther Burstyn, Berlin, Germany; vested in the
Alien Property Custodian

Application filed February 28, 1941

The present invention relates to getters for evacuating electron tubes and similar vessels and more particularly to the manufacture of a flat box adapted for being filled with a getter pill and for being fixed inside of the tube to be evacuated and for being heated by eddy currents.

An object of the invention is a simple method for manufacturing a sheet metal box of the described kind.

A further object of the invention is a method for manufacturing a box which is easily to be closed by a lid after being filled with the getter pill.

In the accompanying drawing the Figures 1a, 1b, 2a and 2b serve for explaining how the lid is deformed in order to close the box. Figs. 3a and 3b show in cross section one form of the box in open and in closed condition whilst Figs. 4a and 4b show another construction in plane view and cross section.

The invention is based on the fact that the outer diameter of a convex sheet disc having the form of a cathode 11 (Fig. 1a) or a frustrum of a cone 12 (Fig. 2a) becomes larger when the disc is pressed flat (Fig. 1b and 2b).

According to the invention the box is manufactured by pressing into a piece 13 of thin metal sheet a round recess 14 (Fig. 3a) the cross section of which is shown on the left side of the figure. The ground of the recess is filled with the flat getter pill 20. The recess is provided with a projecting edge 15 and on the flat border of it the convex lid 12 is put. Now the lid is pressed flat (Fig. 3b) so that it fits closely into the edge 15 and cannot be removed.

The projecting edge 15 may be replaced by a plurality of cogs 16 surrounding the recess 14 according to Figs. 4a and 4b.